

STF Technologies Communications Software Installation Sheet

Thank you for the purchase of this Simple Technology modem. Please follow these steps to insure proper installation of the STF Technologies FaxSTF™ and CommSTF II software for MacOS (System 7 or higher).

Contents

Installation Procedure	1
Using FaxSTF and CommSTF II	2

Installation Procedure

This installation procedure installs a fax communications program (FaxSTF) and a data communications program (CommSTF II).

Also, this installation procedure installs FaxStatus and QuickNote in the Apple Menu; and, FaxMonitor, FaxPrint, FaxPrint GX (System 7.5 or later), STF Toolbox, and STFInit into the Extensions Folder.

Proceed as follows:

1. Install the modem as described in the guide that is provided with the modem.
2. Insert Disk 1 of the software into the floppy drive. The FaxSTF Installer window appears (see *Figure 1*). Double-click on the Installer icon.



3. Follow the on-screen dialog boxes. You will need to enter personal data and the FaxSTF/CommSTF II Serial Number that is recorded on the label of both diskettes.
4. When the FaxSTF Modem Selection dialog box appears (see *Figure 2* on *Page 2*), make sure that the Modem Model option button is selected, then click on "Simple Technology 28.8 Communicator V.34 PCMCIA" in the scroll box.

! Choose the "28.8 Communicator" for the 33.6 Communicator if the 33.6 Communicator is not listed. Except for the name, the configuration for the "28.8 Communicator" and the 33.6 Communicator are equivalent.

Click on the Select button. Continue to follow the on-screen dialog boxes.

4. When the installation is finished, a dialog box informs you that the installation is successful. Click the restart button and wait for the desktop to appear. Installation is complete. Proceed to *Using FaxSTF and CommSTF*.

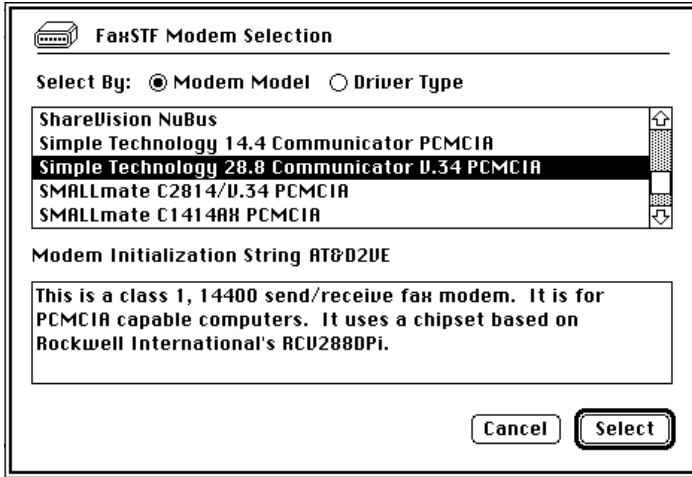


Figure 2. The FaxSTF Modem Selection Window

Using FaxSTF and CommSTF II

For information on how to use FaxSTF and CommSTF II, proceed as follows:

1. After the computer restarts and the desktop appears, the "FaxSTF" window appears (see *Figure 3*). Double-click on the "FaxSTF/CommSTF II Manual" to launch two manuals, one on FaxSTF, and a second manual on CommSTF II.

2. Select Print from the File menu if you want a hard copy of both manuals.

You may now use your modem with FaxSTF and CommSTF II communications software.

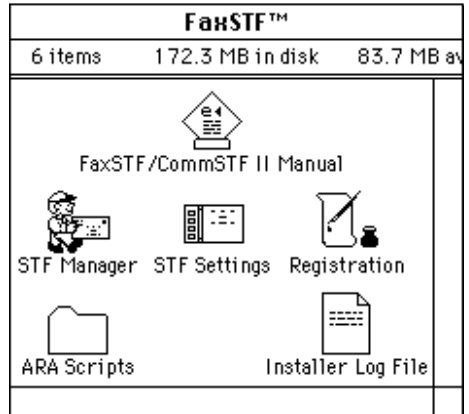


Figure 3. The FaxSTF Window

If you experience any difficulties with the installation, refer to the installation guide. For further help, please contact Simple Technology Technical Support at the following:

Tel: 1-800-367-7330

714-476-1180

Fax: 714-476-1209

Email: support@simpletech.com

Web: <http://www.simpletech.com>

simple
TECHNOLOGY

3001 Daimler St., Santa Ana CA 92705

Document Part Number 60000-00035-002